

# CONSTRUCTION CAREER PATHWAYS FUNDER COLLABORATIVE

The Construction Career Pathways Funder Collaborative invests in activities that directly support increasing the racial and gender diversity of the regional construction trades workforce. For too long, members of underrepresented communities have faced barriers to entry and advancement within the regional construction industry.

With an unprecedented building schedule in the public capital projects pipeline, now is the time to address these barriers, increase the labor supply at the regional level, and transform the industry to advance equitable prosperity.



To address these challenges, Metro's [Construction Career Pathways policy framework](#) and toolkit outlines seven critical strategies to provide reliable career pathways for women and BIPOC people.

Through a collective impact model, the Construction Career Pathways Funder Collaborative coordinates workforce investments and includes large public agencies and relevant industry stakeholders to address the ongoing barriers to diversity and increasing the labor supply in the regional construction workforce

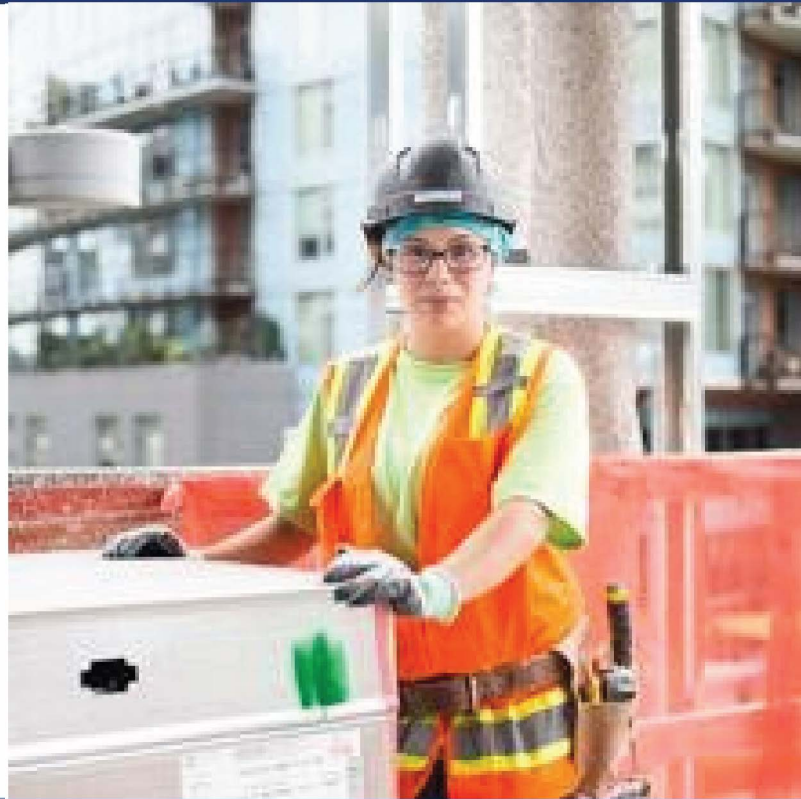


# CONSTRUCTION CAREER PATHWAYS

## FUNDER COLLABORATIVE

**The Collaborative is committed to:**

- Increasing the racial, cultural, and gender diversity of the construction workforce
- Helping the construction workforce to be skilled, sustainable, and sufficient to meet the needs of the community
- Growing opportunities to access high-paying high-quality jobs
- Serving as a community of practice to help inform regional efforts



## GET INVOLVED

To learn more about the Collaborative and how you can become a member, e-mail Anthony Samperio at [asamperio@worksystems.org](mailto:asamperio@worksystems.org).

