

## EARLY LEARNING & CHILD CARE CAREERS



Early Learning Works' Career Coaching can help you get started in a new career at a preschool or child care center.

*Aides and assistant teachers earn a minimum of \$22.27/hour!*

### CAREER COACHING OFFERS:



Job Search Assistance

Interview Prep



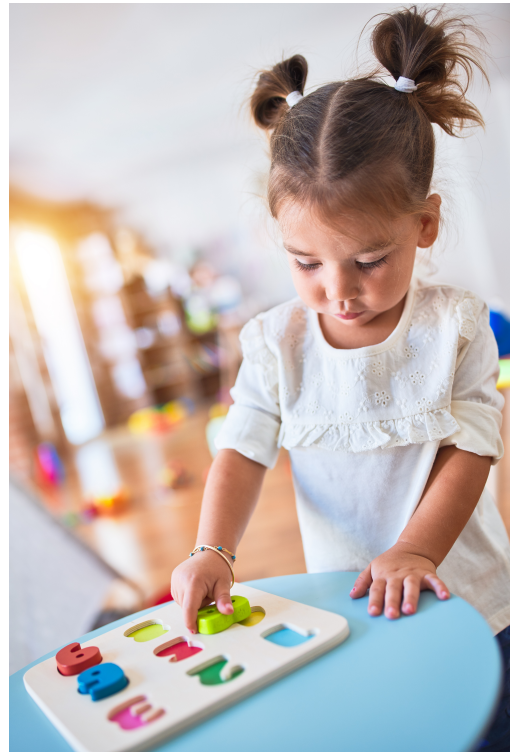
On-the-Job Training

Paid Work Experiences in Licensed Preschools



Support Services (i.e. assistance with child care payments and utility bills)

Assistance Finding and Paying for Training and/or College Courses



### CONNECT WITH A CAREER COACH TO GET STARTED!

*Interpretation services are available at all WorkSource Centers.*

WorkSource Beaverton-Hillsboro:

Alyssa Johnson (English) | [alyssa.johnson6@pcc.edu](mailto:alyssa.johnson6@pcc.edu) | 971-722-2228

WorkSource Gresham:

Maria Bilobrk (English, German, Spanish) | [maria.bilobrk@mhcc.edu](mailto:maria.bilobrk@mhcc.edu) | 503-568-1566

WorkSource N/NE Portland:

Carlos Delima (English, Spanish) | [carlosd@irco.org](mailto:carlosd@irco.org) | 971-419-9742

WorkSource SE Portland:

Natalia Dychko (English, Russian, Ukrainian) | [ndychko@seworks.org](mailto:ndychko@seworks.org) | 971-806-9395

Latino Network:

Xiomy Merida (English, Spanish) | [workforce@latnet.org](mailto:workforce@latnet.org) | 971-344-2441

